

Big Wig Race Cars Ghia Firewall Installation

Pledge spray wax will keep fingerprints off your panels and stop oxidation. So, please spray and wipe with Pledge following removal of the plastic sheeting.

NOTE: To install this firewall set properly, all the tabs that previously held the stock firewall pieces in place should be hammered flat or removed.

Also, to avoid scratching your paint, I suggest temporarily masking the wheel tubs while fitting the panels.

Step 1:

Install side panel brackets as shown. These will attach to the lip on the battery shelf and wheel well with rivets. The brackets should fit flush against the battery shelf and the wheel well.

Rather than trying to drill with the bracket in place, I suggest marking the rivet holes, removing the bracket panel, then center punching each location prior to drilling. You need the center punch to keep the drill from walking, because it's not possible to get straight-on with the drill since the rivet holes are close to the edge.

Attach each bracket with the 4 rivets supplied.

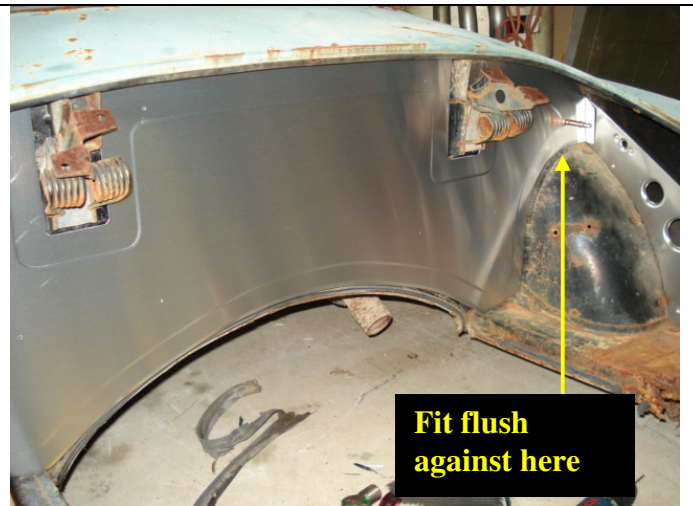


Step 2:

Install rear firewall piece as shown.

If located properly, the rivet holes should land on top of one of the steel firewall ribs.

Before drilling rivet holes, ensure firewall panel is flush with the top edge of each wheel well.



Step 3:

Install the 2 side panels using the DZUS buttons provided.



Please contact me if you have any questions.

Thanks, Ric Campbell - Big Wig Race Cars

DON'T FORGET THE PLEDGE WAX!

DON'T FORGET TO SEND PICTURES WHEN FINISHED!